

# Idaho Falls Earth Day Celebration

Saturday, April 28, 2024



# WHAT IS



Plastic is made in factories using chemicals found in oil and natural gas. These natural gasses and oils are extracted from the earth by digging deep holes into the ground. They are then transported to factories and mixed with other liquids and chemicals to make plastic.



Oil can be removed from the earth and also from the ocean. When drilling for oil from the sea, big drills are arranged on a huge platform called a drilling rig. The gas and oil are then pumped to land by pipelines.



boink



Oil is extracted from the ground.



It is transported to factories.



Factories mix it with other chemicals.



The plastic is moulded into products.



Most plastic melts when heated, so it can be moulded into any shape and dyed into any colour. This makes it very useful, as it can be used to make many different things.

melts



Plastic can be hard and used to make things like TVs, pens, and furniture. It can also be soft, and used to make things like plastic bags, balls, and other soft toys.

Plastic is very strong, but it is also very light, which makes it perfect to use when making cars and aeroplanes.



It can also be turned into very thin threads and then woven together to make raincoats and other waterproof clothing. These plastic materials are called **synthetic materials**.



The word "**plastic**" comes from the Greek word "**plastikos**", which means "**to grow**" or "**to form**".

**Water bottles, straws, and plastic bags.  
Clothes, toys, and plastic tags.  
Plastic, Plastic, it's FANTASTIC! .....**

**Or is it?**

**Did you know?**

There are more than 50 kinds of plastic, and its invention 100 years ago has changed the world.



## PROS



It is strong



It is light



It is cheap



It can be  
moulded into  
different  
shapes



Many  
everyday  
items are  
made from  
plastic



It keeps food  
fresh



It makes  
space travel  
possible



Many life-  
saving items  
are made  
from plastic





**Did you know?**  
Every minute of every  
day, a truckload of  
plastic is dumped into  
the ocean.



## CONS



It is long-lasting



It spoils  
groundwater



It pollutes the  
ocean



Making  
plastic causes  
air pollution



Making  
plastic uses  
A LOT of  
water



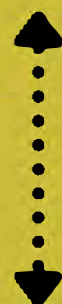
It harms  
animals and  
fish



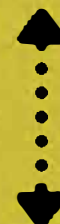
It fills up  
landfills



It can make  
humans sick



Some plastic containers  
can release chemicals into  
food and drinks. People  
can become sick when  
eating or drinking what is  
in the container.



## WHAT ARE MICRO-PLASTICS?

Microplastics are tiny bits of plastic. Some can be the size of your fingernail and others can be so small that you would only be able to see them if you used a microscope.

 **HERRINGTON HOUSE**  
WE MAKE LEARNING MATTER  
[www.herringtonhouse.co.uk](http://www.herringtonhouse.co.uk)

## HOW ARE MICRO-PLASTICS MADE?

One of the ways in which microplastics are made, is when bigger pieces of plastic break down into smaller pieces.

When bigger pieces of plastic find their way into the ocean, they break down through the movement of the ocean's waves. If they are on land, then things like wind and the sun will cause them to break down.



Unlike natural materials such as wood or paper, plastic breaks down VERY slowly, and it can take thousands of years for it to break down completely.

Another way microplastics are made is when they are made on purpose to add to products we use. These microplastics are called “**microbeads**” and are often added to toothpaste or facewash. Another example is material, such as Polar fleece, which is made of lots of tiny plastic threads.





MICRO-PLASTICS

TO FISH

TO YOU

# ARE WE EATING PLASTIC?

# YES!

Micro-plastics are small enough to be eaten by fish, other sea animals ... and YOU when you have fish for dinner.

You could be eating up to 5 grams of micro-plastics every single week. That's the same amount of plastic as one credit card!

**HERRINGTON HOUSE**  
WE MAKE LEARNING MATTER  
[www.herringtonhouse.co.uk](http://www.herringtonhouse.co.uk)

6



If you look around, you'll notice that plastic is everywhere – from the small dice you use to play games, to bigger items such as chairs and tables. Plastic has become such a huge part of our lives, but the problem is that it never goes away!



**EVERY**

piece of plastic made, is still on the earth today!



# PLASTIC POLLUTION

Dropped on the ground, thrown out of a car window, heaped onto an already full rubbish bin, or carried off by a gust of wind ...



**PLASTICS ARE POLLUTING THE ENVIRONMENT**



Enough plastic is thrown away each year to circle the earth  
**4 TIMES !**



**35 BILLION** plastic water bottles are thrown away every year!



By 2050 there could be more plastic in the ocean than  
**FISH !**





**CAN YOU SPOT**



**CHECK YOUR  
SPOTTING**

**12**

**HERRINGTON HOUSE**  
WE MAKE LEARNING MATTER  
[www.herringtonhouse.co.uk](http://www.herringtonhouse.co.uk)

**DIFFERENCES**

**BETWEEN THE TWO IMAGES?**





# THINK BEFORE YOU DRINK

On average, only **10%** of water bottles are actually recycled.

The other **90%** end up in landfills or the ocean!





Around the world an estimated **1 MILLION** birds and **100,000** marine mammals and sea turtles **DIE** each year when they become trapped in plastic or eat it.



**ANIMALS** often eat plastic because they are not always able to tell the difference between plastic and food. Turtles often see floating plastic bags as the jellyfish that are usually on their menu.

Plastic has reached the deepest part of the ocean and it is suffocating the creatures that live there, leading to **THOUSANDS** of deaths.



**6KG**

**10**

In 2018, a whale that washed up on an Indonesian beach had 115 cups, 25 bags, 4 bottles, and 2 slippers in its stomach. More than 1000 smaller pieces of plastic were counted in the whale's stomach, which weighed 6kg.



Many **LAND ANIMALS** also eat plastic.  
Plastic waste coated in food increases the  
chance of it being eaten, as the animal thinks  
that it is food.



When an animal swallows plastic, it blocks their  
stomachs, so they no longer feel hungry.  
Soon they stop eating altogether.  
Animals that accidentally eat plastic suffer,  
and often **DIE** as a result of it.



**POISONOUS** chemicals from  
plastic pollution soak into the  
soil which affects **ECOSYSTEMS**.







HERRINGTON HOUSE  
WE MAKE LEARNING MATTER  
www.herringtonhouse.co.uk

# HOW LONG UNTIL IT'S

# gone?

The main problem with plastics is that they **DON'T** biodegrade, or break down.

Most plastic ends up at the bottom of the ocean where it remains for

**THOUSANDS** of years.



NEWSPAPER



6 WEEKS

APPLE CORE



2 MONTHS

MILK CARTON



5 YEARS

PLASTIC BOTTLE



450 YEARS

BANANA PEEL



4 WEEKS

PLASTIC BAG



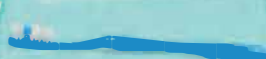
20 YEARS

PLASTIC STRAWS



200 YEARS

PLASTIC TOOTHBRUSH



500 YEARS

CIGARETTE BUTTS



10 YEARS

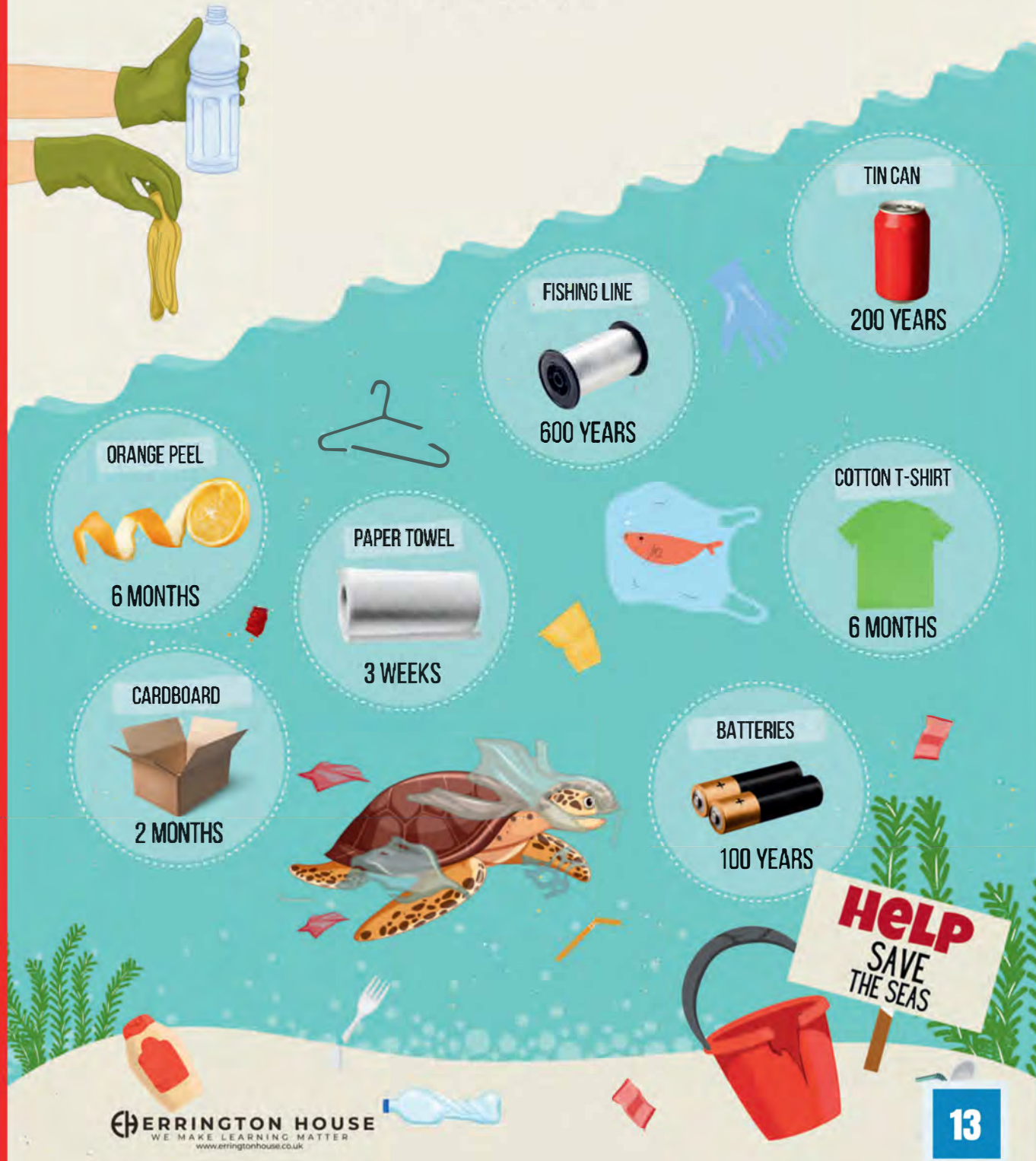
BABY DIAPER



450 YEARS

**STOP**  
OCEAN  
PLASTIC POLLUTION

Even some of the deepest areas of the ocean are **LITTERED** with plastic. Although some plastic floats, others are heavier and will sink.





THERE IS A HIDDEN MESSAGE IN THIS PUZZLE,

<b>A</b>	<b>B</b>	<b>C</b>	<b>D</b>	<b>E</b>	<b>F</b>	<b>G</b>	<b>H</b>	<b>I</b>	<b>J</b>	<b>K</b>	<b>L</b>	<b>M</b>
11	15	24	9	1	21	4	15	7	19	23	2	16
<b>N</b>	<b>O</b>	<b>P</b>	<b>Q</b>	<b>R</b>	<b>S</b>	<b>T</b>	<b>U</b>	<b>V</b>	<b>W</b>	<b>X</b>	<b>Y</b>	<b>Z</b>
5	3	20	14	18	10	22	12	6	25	17	13	8



25 1      24 11 5      10 11 6 1  
       

22 15 3 12 10 11 5 9 10      3 21  
   

11 5 7 16 11 2 10      15 13  
   

10 11 13 7 5 4      5 3      22 3  
       

20 2 11 10 22 7 24



CHECK IF  
YOU'RE  
CORRECT



CAN YOU SOLVE IT?

# 10 WAYS YOU CAN HELP REDUCE PLASTIC POLLUTION

**HERRINGTON HOUSE**  
WE MAKE LEARNING MATTER  
[www.herringtonhouse.co.uk](http://www.herringtonhouse.co.uk)

**01**

## **SAY NO TO PLASTIC STRAWS**

Animals may eat straws they find in their natural habitat, mistaking them for food. These small bits of plastic make them sick and could kill them.



**02**

## **SAY NO TO PLASTIC BAGS**

It takes 20 years for a plastic bag to decompose. Make sure you and your family take reusable bags with you the next time you go shopping.



**03**

## **USE A REUSABLE WATER BOTTLE**

Instead of buying a bottle of water, fill up your reusable bottle each time you're thirsty - you'll produce less plastic waste and save money too!



**04**

## **SNACK ON FRUIT INSTEAD OF CANDY**

Fruit fills you up in a healthy way, and there is no plastic packaging. Have fruit as a snack, and you'll be looking after your body and the environment.



**05**

## **BUY SECOND-HAND TOYS**

Many used toys end up in landfills every year. With a little soap and water, you can turn someone's old toy into a new one for yourself.





**06**

## USE NATURAL PRODUCTS TO CLEAN WITH

Vinegar, lemon juice, and baking soda are great ways to keep your home clean and are not sold in plastic bottles. Bonus!



**07**

## BUY COTTON CLOTHING

Synthetic materials take up to 200 years to break down, and when they do, they turn into micro-plastics that further pollute the ocean.



**08**

## TAKE YOUR OWN CONTAINERS

To reduce single plastic use from disposable packaging, take your own container with you the next time you get takeaway food.



**09**

## USE BAR SOAP INSTEAD OF LIQUID

Switch to using a bar of soap instead of liquid soap, and you'll save the environment from being polluted with another plastic bottle.




**10**

## RECYCLE

Recycling helps the environment and prevents pollution! Old items that are no longer used can be turned into something brand new.



 Nearly one million plastic drink bottles are sold around the world every minute!





# Under THE Sea:

*INL supporting effort to repurpose ocean plastics as blended biofuel feedstocks*

*By Michelle Goff for INL Communications*

Perhaps one of the most powerful images of the ongoing pollution crisis is that of plastic floating in the ocean or littered across sandy beaches. The plastic has grown the Great Pacific Garbage Patch, and microplastics found in fish lead to significant health problems and earlier deaths for marine life. These ocean plastics are a reminder of the negative impact humans can have on the world.

Research at Idaho National Laboratory (INL) addresses some of that impact by helping convert these plastics, combined with biomass, into useful fuels and chemicals.

Three companies submitted plastics to INL's Biomass Feedstock National User Facility to examine processing strategies that could change the fate of these materials. The plastic waste — including nets, buoys and other debris — washed up on beaches. This also included baled Capri Sun pouches, which are 80% plastic and 20% aluminum.

"One thing we want to understand with these baled drink pouches is whether we'll be able to recover and recycle that valuable aluminum at the end of the conversion process," said Luke Williams, a biomass researcher at INL.

"One of the biggest challenges is that because plastics that have washed up on beaches include items like large buoys, tarps and fishnets, they are much harder to break down into a consistently flowable material," Williams said.

The researchers have gained valuable insights into turning ocean plastics into a flowable feedstock. Those insights include how to break down new materials with sometimes unknown compositions and how to blend waste with biomass.

"While some material discarded on beaches can be sorted out and recycled, it's important to have a place and use for the pieces that would otherwise contaminate our environment and contribute to microplastic pollution," Williams said.

## Activity to do at home:



To help in the battle between the planet and plastic, go around your house and write down everything you find that is made of plastic. The length of the list may surprise you!



Try to figure out how you could replace items with things that are made from natural sources. Another idea is to see how you could reuse or repurpose plastic items for more than a single use. Every little bit helps!



At the Idaho Environmental Coalition, our mission is rooted in the values of integrity, safety, and environmental sustainability. We are proud to sponsor Idaho Falls Earth Day and help further this year's focus of Planet vs. Plastics. Plastic's chemical composition does not allow it to fully decompose, creating problems with our planet and human health. Everyday actions such as limiting the use of plastic bags or water bottles can help reduce the problem. Help us spread the word about plastic pollution and reach our goal of building a plastic-free future for generations to come!



## WORD SEARCH

M	C	T	R	A	A	U	V	L	W	M	T	S	A
E	H	T	R	A	E	L	W	H	E	N	C	U	T
T	N	P	L	A	S	T	I	C	E	N	T	S	A
A	R	P	R	N	P	R	U	M	C	A	A	T	L
L	L	A	T	C	O	E	N	R	R	E	P	A	P
T	E	O	Y	S	E	O	W	Y	S	V	C	I	N
R	A	R	M	L	R	E	T	T	L	T	T	N	G
C	E	C	P	I	P	A	S	R	A	N	P	A	N
E	O	C	V	T	N	R	U	S	R	I	T	B	I
L	C	N	Y	R	N	I	W	H	T	W	E	L	T
E	E	C	A	C	L	E	A	N	W	A	M	E	R
I	H	N	S	A	L	E	N	M	E	S	N	R	O
W	A	T	E	R	N	E	P	N	E	T	A	P	S
T	S	O	P	M	O	C	S	A	I	E	A	O	L

COMPOST  
CLEAN  
RECYCLE

ENVIRONMENT  
PAPER  
WASTE

WATER  
SUSTAINABLE  
METAL

EARTH  
SORTING  
PLASTIC

## DID YOU KNOW?

- 1 9.1 billion tons of plastic have been produced since the 1950s.
- 2 79% of all the plastic that has ever been made still sits in landfills or the natural environment.
- 3 Americans purchase about 50 billion water bottles per year. By using a reusable water bottle, you could save an average of 156 plastic bottles annually.
- 4 The world produces more than 26 million tons of polystyrene (plastic foam) each year.
- 5 Americans alone throw away around 25 billion Styrofoam coffee cups every year.
- 6 At least 14 million tons of plastic end up in our oceans every year.
- 7 When plastics end up in landfills, they break down into tiny toxic particles that contaminate the soil and waterways and enter the food chain.

For more information on IEC and our mission to protect the Snake River Aquifer, visit:

**IDAHOENVIRONMENTAL.COM**



I O E X E T Q A N X X Z E P  
 L N K S E L N R E T A W V L  
 F U N N U I C M U O G U R A  
 Y R A O M E U Y P Y S Q E S  
 A L I A V J L O C X Q G S T  
 P P L Q E A L Q C E R T E I  
 O S L S P L T W N T R C R C  
 M E U A U Z T I U I Y M P S  
 H E R T N R J Q O G S G H K  
 R T I X G T U D J N W F T X  
 X O C I T V S S Y I I H R B  
 N B G Z R T P U R S I D A N  
 O X Y G E N U T J K M X E E  
 U I C L E A N U P R C L W L  
 W L P B S U U H D N A M E Y

**You can help save  
our planet by using  
less single-use  
plastics.**

**For Earth Day 2024,  
join North Wind in  
using more reusable  
bottles.**

## The Problem:

DISRUPT  
PLASTICS  
POLLUTION  
SINGLE USE

## What We Can Save:

ANIMALS  
EARTH  
OXYGEN  
PLANET  
PLANTS  
TREES  
WATER

## How to Do It:

CLEAN UP  
INNOVATION  
PRESERVE  
RECYCLE  
REUSE



# IMAGINE, INSPIRE, CREATE!

Digital & Hands-On Activities • Virtual Gallery • Stop Motion Animation  
Virtual Symphony • Green Screen Studio • New Art Classes Every Month  
Family Activities Every Week • New Themed Projects Each Month



## HOURS

SUN 1-5pm  
MON 4:30-7:30pm  
TUE-SAT 10am-6pm  
\*Last entry is 30  
minutes before  
close time

Check out our website for  
**SUMMER classes!**



artitoriumonbroadway.org  
271 West Broadway (208) 552-1080

Our vision is to  
provide welcoming,  
fun-focused, and  
imaginative experiences in  
the arts for kids and families,  
and to be a valuable and  
meaningful resource for  
caregivers and teachers  
across eastern  
Idaho.





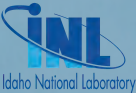
# 2024 SUMMER CAMPS

## EDUCATOR CAMPS

### 5 CAMPS IN JULY

Teachers & school administrators,  
earn CEU credit the fun way!

**Learn more & register:**

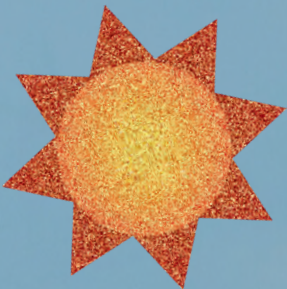


## KIDS DAY CAMPS

### JUNE - AUG

Choose from up to four different  
camps for ages 6-9 or 10+!

**Learn more & register:**





# Looking For Wild Summer Fun?



## Summer Zoo Camps

4 days filled with animal encounters, crafts, games, and learning. These programs are available for children ages 5 to 13.

## Zoo Tots

45 minutes classes held on the first Friday and Saturday of the month. Visit the zoo with your 3 to 5 year old to read stories, do crafts,

For more information about programs and registration, please visit our website at:

[www.idahofallszoo.org](http://www.idahofallszoo.org)

or contact the zoo's Education Department at [zooeducation@idahofallszoo.org](mailto:zooeducation@idahofallszoo.org).







Join us for Earth Day at Happyville Farm

Saturday, April 27, 11:00am - 3:00pm  
640 S. Saturn Ave., Idaho Falls

*Come see what we're planting at our urban organic farm and get some answers to your home garden questions!*

- ★ *Learn how we win benches by recycling plastic bags and other plastic film*
- ★ *Say hi to the worms that help compost at the farm, and learn ways to compost better at home!*
- ★ *See how high desert natives can save water, create beauty, and support more pollinators!*
- ★ *Register your kids for summer learning at the farm!*
- ★ *Find out about our classes on composting, soil building, native plants, pollinators and more!*

Join the farm here



[www.happyvillefarm.org](http://www.happyvillefarm.org)  
Follow us on FB: Happyville Farm Idaho Falls

Register for kids'  
classes here







BONNEVILLE COUNTY 2024

# MASTER GARDENER PROGRAM



This program provides gardeners with an intensive education in horticultural principles.

*Helping  
people  
grow*

As a Master Gardener you will work extensively with the public and have the opportunity to participate in organized volunteer activities and or develop special horticultural programs in your community.

## TRAINING CLASSES OFFERED WITH A WIDE VARIETY OF HORTICULTURAL SUBJECTS

Introduction to Horticulture • Botany & Plant Science • Basic Entomology  
• Vegetable Culture & Crops • Fruits • Herbaceous Plants • House Plants  
• Trees & Shrubs • Pruning & Grafting • Basic Plant Pathology  
• Plant disease & Diagnosis • Soil Health • Weed Management  
• Composting • Irrigation • Turfgrass • Landscape Design

Training starts late Jan/early Feb

Certify to become an Idaho Master Gardener

Class fee for lab supplies and reference materials

36 Hours of Instruction, 40 Hours of Volunteer Time

Open Book Quizzes & Exams on material covered in class

Application materials mailed in early December

To sign up to receive materials & for more information visit

<https://www.uidaho.edu/extension/county/bonneville/horticulture/master-gardener>



**When you save the bees .**  
**You save the earth .**



**Browning's Honey Co., Inc.**

**9019 N 5th E**

**Idaho Falls, ID 83401**

**208-523-3692**

**[www.browningshoney.com](http://www.browningshoney.com)**

Due to an international importing ban, most locations do not accept plastics #3-7





## BATTERIES (Lead-Acid)

- 1 Automotive Charging/Starting, 935 Lindsay Blvd
- 2 Batteries Plus, 2182 Channing Way
- 3 The Battery Guy, 1345 Enterprise St
- 4 Start Specialists, 3125 E 49th N
- 5 Auto Parts Stores (various, call first), 1562 W Broadway St | 2517 N Holmes Ave



## BATTERIES (Rechargeable)

- 2 Batteries Plus, 2182 Channing Way
- 6 Home Depot, 2075 S Holmes Ave
- 7 Lowe's, 925 E 17th St
- 8 Staples, 1999 S 25th E
- 9 uBreakiFix, 2003 S 25th E D-2



## BOOKS

- 10 Albertsons (outside bins 3 locations), 1705 W Broadway St | 590 E 17th St | 1901 S 25th E
- 11 Idaho Falls Public Library, 457 W Broadway St



## BULBS (CFL/Florescent)

- 2 Batteries Plus, 2182 Channing Way
- 6 Home Depot, 2075 S Holmes Ave
- 7 Lowe's, 925 E 17th St



## CHRISTMAS TREES

- 12 City of Idaho Falls (seasonal), 308 Constitution Way



## CARDBOARD

- 13 Western Recycling (outside bins), 1020 Denver St
- 14 U-Haul, 1091 Northgate Mile | 1545 W Broadway St | 3101 E 17th St Ammon
- 15 Pacific Steel and Recycling, 1155 N Higbee Ave



## ELECTRONICS (verify with location accepted electronics)

- 2 Batteries Plus, 2182 Channing Way
- 16 Best Buy, 2404 S 25th E
- 17 Cartridge World, 2064 E 17th St #2
- 18 ecoATM (4 locations inside kiosks), 500 S Utah Ave | 333 N Woodruff Ave | 1555 Northgate Mile | 1201 S 25th E
- 19 eCyclers, 1976 N Yellowstone Hwy
- 8 Staples, 1999 S 25th E
- 20 Target, 2171 S 25th E
- 9 uBreakiFix, 2003 S 25th E D-2
- 15 Pacific Steel and Recycling, 1155 N Higbee Ave



## GLASS

- 12 City of Idaho Falls (see map for 13 outside bin locations)
- 20 Target, 2171 S 25th E



## HAZARDOUS WASTE

- 21 Bonneville Cty Transfer Station, 2nd Saturday of May and September 2455 Hemmert Ave



## INK CARTRIDGES/TONER

- 17 Cartridge World, 2064 E 17th St #2
- 19 eCyclers, 1976 N Yellowstone Hwy
- 6 Home Depot, 2075 S Holmes Ave
- 8 Staples, 1999 S 25th E
- 20 Target, 2171 S 25th E



## PAPER

- 13 Western Recycling (outside bins), 1020 Denver St
- 22 Post Office (customers only inside bin), 875 N Capital Ave | 605 4th St
- 11 Idaho Falls Public Library (for shredding only), 457 W Broadway St



## PLASTICS (#1 & 2)

- 20 Target (#s 1-7), 2171 S 25th E



## PLASTIC BAGS/FILM

- 10 Albertsons (3 locations inside bins), 1705 W Broadway St | 590 E 17th St | 1901 S 25th E
- 23 Broulim's (2 locations inside bins), 2730 E Sunnyside Rd
- 24 Kohl's, 3175 S 25th E
- 20 Target, 2171 S 25th E
- 25 Fred Meyer, 1555 Northgate Mile
- 26 WinCo, 333 N Woodruff Ave



## SCRAP METAL

- 16 Best Buy (appliances, 2404 S 25th E)
- 15 Pacific Steel and Recycling, 1155 N Higbee Ave
- 13 Western Recycling, 1020 Denver St



## TIN/ALUMINUM

- 13 Western Recycling (outside bins), 1020 Denver St
- 15 Pacific Steel and Recycling, 1155 N Higbee Ave
- 20 Target, 2171 S 25th E



## TIRES

- 27 Big O, 265 Northgate Mile | 3193 E 17th St
- 28 Discount Tire, 2523 E 17th St
- 29 Fred and Wayne's, 1970 N Yellowstone Hwy
- 30 Les Schwab, 210 Constitution Way | 970 E 17th St
- 31 Jack's Tire and Oil, 595 E Anderson St | 4490 Andco Dr



## UNUSED/DISCARDED MEDS

- 32 Bonneville Cty Law Enforcement, 605 N Capital Ave

Locations provided as information only. Listing does not indicate endorsement of listed business. Subject to change. All city locations have bins to accept glass bottles for recycling.

# SPRING-SUMMER 2024 CALENDAR

## APRIL

- 2 Lifeguard Class Starts
- 3 Youth Baseball Registration Deadline, STARTS May 13
- 3 Free Swimming Lesson Day Registration OPEN, Lesson May 11
- 3 Disc Golf Registration OPEN, STARTS June 4
- 3 Tennis Lessons/Camp Registration OPEN, START June 10
- 5&6 Zoo Tots: Penguins 10-10:45am
- 6 Spring 2 Surfers Swim Team & April Swimming Lessons START
- 11 Junior Golf Registration OPEN
- 12 Junior Zoo Crew Registration Deadline
- 13 Zoo Community Spring Clean-Up Day: 9am-1pm
- 17 Zoo Opening Day: 9:30am-5pm
- 17 Men's and Co-ed Softball Registration Deadline, STARTS MAY 13
- 18 Golf Demo Day
- 20 Pool Closed for all day Swim Meet
- 23 April/May Swimming Lesson A START
- 24 Little Hitters Registration #1 OPEN, STARTS May 21
- 24 Little Kickers Registration #2 OPEN STARTS May 22
- 24 Girl's Fastpitch Softball Registration Deadline
- 24 Mother's Day Golf Pro Shop Sale Begins
- 27 Cub Scout Expo, 10am-2pm @ Tautphaus Park
- 27 Earth Day at the Zoo 9:30am-5pm

## MAY

- 1 Summer Men's Basketball Registration Opens, STARTS June 10
- 1 TBall and Pitching Machine Registration Deadline
- 3&4 Zoo Tots: My Favorite Bear 10am-10:45am
- 4-5 Cinco De Mayo Celebration @Sandy Downs 11am-7pm
- 11 Free Swimming Lesson Day at Aquatic Center
- 13 Summer Swim Team and Swimming Lesson Registration OPEN
- 13 Summer Swim Camp Registration OPEN, Camp August 5-15
- 14 Lifeguard Class Begins
- 15 Ice Breaker Fastpitch Softball Tournament Deadline
- 24-27 Field of Honor @ Freeman Park
- 25 Pool Closed for Pre-Summer Cleaning
- 27 Special Memorial Day Hours @ Aquatic Center, Lap & Public Swim 1pm-6pm
- 27 Dixie's Diner Golf Tourney @ Pinecrest
- 29 Flag Football Registration OPEN, STARTS August 17
- 30 Golf Pro Shop's Father's Day Sale STARTS
- 31 Zoo Tots: Tails 10am-10:45am

## JUNE

- 1 Zoo Tots: Tails 10am-10:45am
- 3-6 Zoo Camp: Eco Explorers ages 11-13
- 3 Aquatic Center Summer Hours Begin
- 3 June A&D Swim Lessons START

## JUNE CONT'

- 4 June C&E Swim Lessons START
- 5 Adult Summer Men's Basketball Registration Deadline
- 5 Ball on the Falls Softball Tournament Registration Deadline
- 5 Tennis Lessons/Camp Registration Deadline
- 8 Family Golf Day @ Pinecrest 3pm-Close
- 10-13 Zoo Camp: Eco Explorers ages 5-7
- 12 Little Kicker's #3 Registration OPEN, STARTS July 10
- 14 TPZS Concert Series @Zoo
- 15 Family Golf Day @ Sand Creek 3pm-Close
- 17 June B Swim Lessons START
- 17-20 Zoo Camp: Eco Explorers ages 8-10
- 19 Little Hitters #2 Registration OPEN, STARTS July 16
- 19 Fall Men's/Co-Ed Softball Registration OPEN, START August 5
- 22 Idaho Falls Pride Parade and Festival, 10am-5pm
- 22 Family Golf Day @ Sage Lakes 3pm-Close
- 26 Diamond Classic Softball Tournament Registration Deadline
- 29 Family Golf Day @ Pinecrest 3pm-Close

## JULY

- 1-4 Zoo Camp: Eco Explorers ages 8-10
- 3 Surfer's Summer League START
- 4 Aquatic Center and Rec Office CLOSED, Golf Courses Close at 7pm
- 5&6 Zoo Tots: Honey...Honey...Lion! 10am-10:45am

## JULY CONT'

- 6 Family Golf Day @ Sand Creek 3pm-Close
- 8 Surfer's Swim Team and Swim Lessons START
- 8-11 Zoo Camp: Eco Explorers ages 5-7
- 10 Fall Volleyball Registration OPEN, START September 7
- 10 Adult Men's Fall Basketball Registration OPEN, START September 9
- 12 TPZS Concert Series @ Zoo
- 13 Family Golf Day @ Pinecrest 3pm-Close
- 15-18 Zoo Camp: Eco Explorers ages 11-13
- 17 Fall Youth Basketball Registration OPEN, START October 12
- 17 Little Passers Registration OPEN, START August 15
- 19 TPZS Wines in the Wild @Zoo
- 20 Family Golf Day @ Sage Lakes 3pm-Close
- 20-21 Eagle Rock Art Guild Sidewalk Art Festival @ Greenbelt Stage on Memorial
- 24 Fall Jr. High Basketball Registration OPEN, START September 12
- 24 Little Kickers #4 Registration OPEN, START August 21
- 24 Fall Adult Softball Registration Deadline
- 24 Flag Football Registration Deadline
- 27 Family Golf Day @ Sand Creek 3pm-Close
- 29-Aug 1 Zoo Camp: Eco Explorers ages 8-10
- 31 War Bonnet Round Up Kickoff 4:30pm-8pm @ Sandy Downs FREE EVENT

## AUGUST

- 1-3 Warbonnet Round Up 4:30pm-10pm @ Sandy Downs
- 2-3 Zoo Tots: Beaks! 10am-10:45am
- 3 Family Golf Day @ Sage Lakes 3pm-Close
- 5-8 Zoo Camp: Eco Explorers ages 5-7
- 5-15 Surfer's Swim Camp
- 5 August A Swim Lessons START
- 6 August C Swim Lessons START
- 7 Fall Volleyball Registration Deadline
- 8-10 Roaring Youth Jam presented by Idaho Falls Art Council @ Riverwalk on Memorial Drive
- 9 TPZS Concert Series @ Zoo
- 10 Kid's Tri Harder Triathlon @ Aquatic Center
- 10 Family Golf Day @ Pinecrest 3pm-Close
- 10 Great Snake River Duck Race 10am-4:30pm @ Westbank Snake River by falls
- 12-15 Zoo Camp: Eco Explorers ages 11-13
- 16 TPZS Zoo Brew @ Zoo
- 17 Family Golf Day @ Sand Creek
- 21 Little Kickers #4 START
- 24 Family Golf Day @ Sage Lakes 3pm-Close
- 26 TPZS Membership Picnic @Zoo

## RECURRING EVENTS

- Every Saturday May 4-October 26 Idaho Falls Farmers Market 9am-2pm
- Every Tuesday June 11-August 27 River Concert Series by IF Art Council @Greenbelt Stage 6:15pm-8:30pm
- Summer Public Swim Time: M-F: 1pm-3:30pm; 6pm-8pm (No Thursday starting Aug. 8) Sat: 2pm-7pm
- Summer Lap Swim Time: M-Thurs: 5:30am-1pm; 8pm-9pm Fri: 5:30am-9pm Sat: 6am-8am; 2pm-7pm

IDAHO FALLS  
PARKS & REC

IDAHO FALLS  
PARKS & REC  
AQUATICS

IDAHO FALLS  
ZOO  
AT TAUTPHAUS PARK

IDAHO FALLS  
GOLF





# Idaho Falls Earth Week Celebration!

Check out these great activities to participate in!

## INL Earth Day Art Contest

**April 19-27**

Theme: Planet vs. Plastics

Categories: Ages 3-5, 6-10, 11-14, 15-18

Prizes awarded - submit to [inl.gov/earth-day/](http://inl.gov/earth-day/)

## Plogging Challenges! Earth Day Bike Ride

**School classroom challenges available!**

Ride your bike or collect litter while walking or jogging during earth week. Submit a photo to [idahofallsearthday@gmail.com](mailto:idahofallsearthday@gmail.com) to be posted on our social media and entered into the Earth Day raffle for prizes. See [IFearthday.com](http://IFearthday.com) for details.

## Happyville Farm Activities

**Saturday, April 27th - Details inside**

## Visit the Idaho Falls Zoo

**Saturday, April 27th. Earth Day Booth Activities, Contest Prizes, Food, Live Band Entertainment, etc.**

**Children ages 0-12 can get into the zoo for free with a paid adult, admission & canned food donation!**

**Adult admission will be half-price during the Idaho Falls Earth Day Celebration from 10 am - 2 pm only**

**[www.IFearthday.com](http://www.IFearthday.com)**

