



INVEST IN OUR PLANET

EARTH DAY 2023

This year's Earth Day theme is "Invest in our Planet." We can ALL implement action in our lives to help invest in our planet. Businesses and citizens are accountable for helping to contribute to sustainable and prosperous future, so we have a healthy planet for years to come.

What does "Invest in our Planet" mean to you?

Encourage your classroom to enter the INL Earth Day Sidewalk Art Contest!

Visit inl.gov/earth-day/ for contest details. Entries are due by April 14th!



IDAHO FALLS EARTH DAY CELEBRATION



APRIL 22, 2023
10:00 A.M. - 2:00 P.M.
IDAHO FALLS ZOO AT TAUTPHAUS PARK
IFEARTHDAY.COM

Join us for our annual Idaho Falls Earth Day Celebration! Come and explore the Idaho Falls Zoo at Tautphaus Park and visit different booths to learn about recycling, soil, plants, energy and more!

On Saturday, April 22 from 10:00 a.m. to 2:00 p.m., kids ages 0-12 can get into the zoo for free with a paid adult admission AND a canned food donation. Adult admission will be half-priced during the Idaho Falls Earth Day Celebration. Admission to the zoo for Earth Day is sponsored by the Idaho Environmental Coalition. Food vendors will be located outside the zoo near the Hockey Arena during the celebration for you to purchase from if desired.

See booths throughout the zoo from the Idaho Environmental Coalition, Idaho National Laboratory, The Department of Environmental Quality, The Museum of Idaho and more!

When you visit the zoo, make sure to pick up an **Earth Day Passport** to take with you to the different booths at the Zoo.



Join our Captains of the Planet

to keep our earth a special
place for all future
generations to enjoy!

PRACTICE THE 4Rs OF EARTH CARE

make a difference
be aware
love the earth
tell others
living green
reduce
reuse
recycle
respect
conserve
car pool
roller blade
bicycle
walk
canvas bags
have a recycling
bin
energy efficient
wind power
solar power
plant trees
pick up litter
clean up streams
restore parks

r	e	s	t	o	r	e	p	a	r	k	s	c	l	w	e	r
s	s	n	r	n	s	o	s	l	p	e	c	e	p	i	k	i
l	r	r	e	c	y	c	l	e	a	c	l	s	e	n	v	l
i	e	l	w	r	a	v	k	l	b	n	r	r	s	d	a	l
v	t	o	o	v	g	e	l	i	e	e	t	m	l	p	f	s
i	t	o	p	v	l	y	r	r	h	r	a	t	r	o	v	e
n	i	p	r	f	e	c	e	t	e	e	b	w	r	w	t	o
g	l	r	a	e	w	t	o	f	r	f	c	l	a	e	r	p
g	p	a	l	y	a	l	h	t	f	f	e	u	a	r	e	e
r	u	c	o	t	l	w	s	e	w	i	e	e	d	d	e	s
e	k	e	s	e	k	p	a	t	e	d	c	e	l	e	e	c
e	c	a	t	g	u	m	a	i	c	a	r	i	i	c	r	l
n	i	b	g	n	i	l	c	y	c	e	r	a	e	v	a	h
o	p	p	a	l	e	e	p	w	u	k	p	t	v	n	r	e
s	a	e	c	a	n	v	a	s	b	a	g	s	h	s	t	c
e	l	c	y	c	i	b	e	e	t	m	e	g	e	p	l	k
c	o	n	s	e	r	v	e	r	e	d	e	c	r	r	a	t



REDUCE

- Buy products with less packaging to reduce the garbage you make.
- Conserve energy by turning off the TV, computer, radio, and lights as soon as you're done with them.
- Walk or ride a bike to save gasoline and cut back on air pollution.
- Don't waste water - turn faucets off tightly and take short showers.

RECYCLE

- Recycle all you can -- metal, glass, plastic, and paper.
- Buy things made out of recycled products.

REUSE

- Find new ways to use old things.
- Buy things that you can use over and over.
- Donate or give things to someone else who can use them.

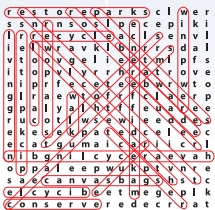
RESPECT THE EARTH

- Never litter.
- Be kind to animals.
- Volunteer for Earth-care events.
- Enjoy nature and the beauty of our planet.

Protecting Your Drinking Water



Come and see us at the Department of
Environmental Quality's booth during
Earth Day Celebration 2023
Saturday, April 22nd



6 WAYS TO INVEST IN OUR PLANET

1. Plant Trees

Planting trees and other plants helps improve our local ecosystem.

2. Reduce Plastic Use

Make a plan to reduce your plastic consumption by finding alternative products to use, such as a reusable water bottle or reusable grocery bags.

3. Participate in Advocacy

Speak up and encourage others to reduce, reuse and recycle!

4. Sustainable Fashion

Learn about how 'fast fashion' can be hurtful to the earth and the importance of sustainable fashion and commit to responsible consumption.

5. Reduce Water Use

Commit to using less water by taking shorter showers, turning off the water while you wash your hands or brush your teeth and many other ways.

6. Get Involved

Get involved in community events that promote a healthy earth like our Idaho Falls Earth Day Celebration on April 22nd at the Idaho Falls Zoo!



SUSTAINABILITY



What does **sustainable** mean?

Sustainable means to create a way we live that can be maintained for a long period of time. This means we need to make sure we are using natural resources, like water, trees, and fossil fuels, responsibly so we don't run out of them.

We can all work on sustainable actions by doing simple things like turning the water off when you are brushing your teeth, recycling products that can be recycled, and buying gently used clothes or other products that can be used again.

We can come together to create a partnership for our planet, because a green future is a prosperous future!

Visit
earthday.org
to learn more
about how you
can help create
a sustainable
future.



Seven ways to live a more sustainable life

- 1. Reduce food waste.** Cutting down on your family's food waste is one of the most powerful steps you can take. Plan your meals for the week and eat/repurpose leftovers the following day.
- 2. Conserve water.** Be conscious of how much water you are using and wasting while completing household tasks.
- 3. Save energy.** Conserving energy has many benefits. Purchase energy saving light bulbs and appliances.
- 4. Cut back on single-use plastics.** Avoiding using items such as plastic straws, plastic grocery bags and plastic bottles is an easy way to help reduce plastic pollution.
- 5. Recycle.** Recycling the right items helps you become more eco-friendly.
- 6. Drive less.** The fewer vehicles on the road the better. Take public transportation if possible, walk, bike or even carpool.
- 7. Upcycle.** Take a product and turn it into something else, such as using an old t-shirt as a cleaning rag.

A SUSTAINABLE LIFESTYLE

Did you know?



The average American household uses **300 gallons** of **water** daily



Each year, **150 million** tons of single-use **plastics** are produced worldwide



In the United States, **40 percent** of all **food** is wasted.

Practice the 3 R's: Reduce, Reuse, Recycle

In order to help the planet, we need to practice the 3R's every day. Work with your family to complete two activities from each section. See if you can incorporate a few of these into your everyday routine. All of these activities may seem small, but together we can make a difference!

Reduce

- A. Bring a waste free lunch to school (don't forget a cloth napkin!).
- B. Bring a reusable water bottle to school instead of a plastic bottle.
- C. Walk or bike to school instead of being driven.
- D. Cut your shower time by 2-3 minutes.
- E. Turn off the water while you brush your teeth.

I completed _____ and _____.

Reuse

- A. Donate a few old clothing items to charity.
- B. Donate old toys to charity.
- C. Upcycle, think of a new way to use an item. Write a sentence explaining the use.
- D. Collect rainwater to use. (ex: watering plants)
- E. Bring a reusable bag shopping (or reuse an already owned plastic one).

I completed _____ and _____.

Recycle

- A. Talk with your parents about recycling at home.
- B. Create an item from recycled materials. Be creative. See if you can create something useful.
- C. Ensure all materials are recycled at home and in your classrooms for one week.

I completed _____ and _____.



Sustainability

WORD PUZZLE

C	T	R	E	S	O	U	R	C	E	F	O	W
I	F	E	D	Q	S	K	U	T	B	O	Q	T
T	S	B	N	P	J	P	M	U	I	O	U	R
S	J	U	O	A	C	B	X	W	C	D	R	E
A	J	R	S	Y	L	E	R	U	T	A	N	E
L	C	R	C	T	L	P	Q	B	X	S	S	S
P	E	L	E	I	A	E	E	A	R	T	H	E
X	E	T	G	N	L	I	I	C	H	C	L	R
W	M	H	S	C	E	R	N	U	G	C	O	E
H	T	J	Y	A	F	R	X	A	Y	H	Z	T
C	U	C	O	J	W	K	G	C	B	E	F	A
U	I	K	L	A	W	E	E	Y	T	L	Z	W
B	C	Y	X	U	N	R	E	G	P	W	E	M

DIRECTIONS:

Find each word listed below in the puzzle. Keep in mind that words can go in any direction. The words do not share letters.

BICYCLE

FOOD

PLASTIC

TREES

WATER

CROPS

LIGHT

RECYCLE

UPCYCLE

EARTH

NATURE

RESOURCE

WALK

ENERGY

PLANET

SUSTAINABLE

WASTE

SUSTAINABLE FASHION

What is fast fashion?

Fast fashion is designing and manufacturing large amounts of low quality, cheap clothing so people feel compelled to buy the newest fashion. While buying lots of low priced trendy clothes might be fun, this new fast fashion trend is actually hurting the earth. Fast fashion depletes healthy soil from growing too many crops to support the quantity of supplies needed, contaminates fresh water sources, pollutes the air from factory use, and uses more limited natural resources like water and paper.

What is sustainable fashion?

Sustainable fashion refers to clothes made ethically using environmentally friendly processes. Brands create clothing that reduces the impact on the environment, but are also mindful of the people who work to produce the garments. It aims to reorient the industry and consumers away from the fast fashion model and toward sustainable practices in sourcing, production, distribution, marketing, and consumption.

A lot of clothes are actually made out of plastic, plus thousands of harmful chemicals are used in the textile mills around the world, which are dangerous to both the environment and the people working with them. The time has come for a global change in the fashion industry.

The fashion industry produces 150 billion garments a year and 87 percent end up in a landfill

The average person today buys 60 percent more items of clothing than they did 15 years ago, but they only keep them half as long.



Only 1 percent of all discarded clothing is actually recycled.

What you can do:

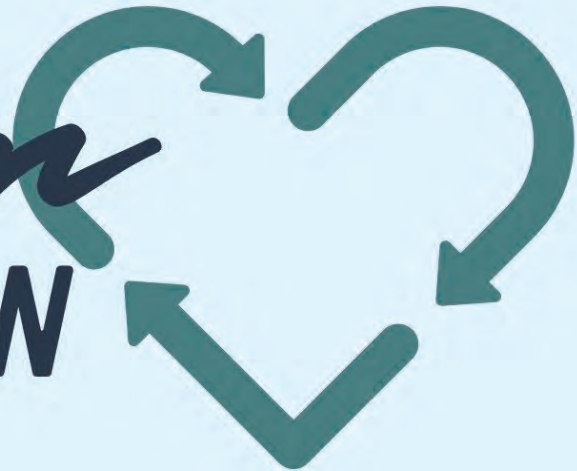
We can all make choices that will better help the earth with our clothing choices. This includes:

- Educating yourself about sustainable clothing
- Buy less and shop for quality over quantity
- Choose natural materials, such as organic cotton, linen or hemp
- Research brands to identify those that are ethical and practice transparency and sustainability.
- Choose brands that are manufactured in their own community and connected to the place, people behind them, local economy, and environment.
- Buy secondhand clothing
- Swap clothes with a clothes swap or with friends with an adult's permission
- Learn how to repair your clothes yourself to be able to keep your clothes for longer.

NATHAN LAYNE INSTITUTE

PRESENTS OUR FIRST ANNUAL

Trashion SHOW



WHERE REPURPOSED TRASH
BECOMES *fashion*

April 29th, 2023
5:00pm

141 E. Chubbuck Rd. Chubbuck
ID 83202

TICKETS \$10



208-232-9170



ALL PROCEEDS
WILL GO TO
EASTERN IDAHO
ENVIRONMENTAL
EDUCATION
ASSOCIATION
(EIEEA)

Create a CAPSULE WARDROBE

Why create a capsule wardrobe?

Creating a capsule wardrobe can save you time, money, stress and will ultimately focus on more sustainable practices. Approaching shopping with a capsule wardrobe can give you the power to steer away from impulsively buying new trendy pieces and ensures that each item in your closet becomes a core part of your outfits.

Get started!

- » Begin by completing a wardrobe audit of all your current pieces and note any items that you regularly wear and items you have not touched in ages. *(It's important to consider your lifestyle and daily activities to help you gain a better understanding of your style, favorite materials, and fits.)*
- » Next, create your capsule wardrobe using a combination of items you already own, as well as a few new quality items that will last you for years to come.
- » Start out with a basic color (black, grey), add some neutral pieces that work with everything, look for some accent colors that suit your own coloring and try to incorporate some patterns.
- » Ultimately, a 30-piece wardrobe should provide you with a diverse selection of outfits for many occasions.



What should be in my capsule wardrobe?

A capsule collection should give you the ability to change from day to eveningwear and from casual to dressy. Here's a suggestion for a 30-piece capsule wardrobe:

- **Several basic tees or tops in neutral tones** — long and short sleeve
- **Several basic tees or tops in accent colors** — long and short sleeve
- **Two tank tops:** one dressy, one for layering
- **Several blouses:** in a rich fabric for dressy occasions and sturdier casual materials that can be worn with jeans or shorts
- **Several sweaters:** one should be a cardigan
- **Dressy separates:** one skirt and one pair of pants
- **Slacks and jeans:** two pairs of jeans and a pair of slacks
- **Dresses:** one for everyday wear, and a black dress that can be dressed up or down
- **Jackets:** a jean jacket, a blazer and one other versatile jacket
- **Coats:** a well-made trench coat or other warm coat
- **Shoes:** sandals, high heels, flats, boots, walking shoes and sneakers

Accessories go a long way to changing an outfit. Choose jewelry, bags, hats and scarves that complement your capsule wardrobe. Remember, the capsule collection can be swapped from season to season and will always look good.

#FashionfortheEarth

Recycle Row

recycle your unwanted waste!

accepting:

- ✓ cardboard
- ✓ tin/aluminum
- ✓ glass
- ✓ plastics (#1 & #2)
- ✓ electronics

located @
idaho falls
earth day
celebration
near the zoo
entrance



visit our booth to
pick up your
earth day passport

PLASTIC POLLUTION

What do you know about **plastic pollution**?

If you have recently walked down city streets, in the countryside, or even along a beach on a remote island, you might notice something in common: **plastics**. Plastics are some of the most commonly littered items in the world and they are drowning our planet.

Is this a real problem, you might ask? Plastics have come to clutter almost every landscape, but they are useful and have made our lives much easier. We can carry our purchases from the store, stay dry in the rain, store things easily and securely, and preserve perishable food. Plastics are present in furniture, construction materials, cars, appliances, electronics and countless other things.

Did you know?

- » Every year, we produce four hundred million tons of plastic waste and less than 8 percent is recycled.
- » Every minute, every day, we buy one million plastic bottles, and each year we use five trillion plastic bags, almost all of which end up in our rivers, oceans, our food, and our landfills.



BREAK FREE FROM PLASTICS

6 R's of Plastic Pollution: Reduce, Reuse, Recycle, Remove, Refuse, Rally

Plastic's chemical composition makes it unable to fully decompose, causing pollution to build up and creating problems for our planet and human health. Everyday actions can lessen the problem. You might know the 3 R's - **Reduce**, **Reuse**, **Recycle** - but we suggest three more to help reduce plastic pollution. They are **Remove**, **Refuse**, and **Rally**. **Remove** plastics by helping pick up trash in your neighborhood and parks. **Refuse** using plastics, for example, make it a habit to say, "no straw, please." **Rally** for a plastic free environment by sharing information about plastic pollution to friends and family. Encourage your friends and family to calculate their plastic footprint!

What are Single-use plastics

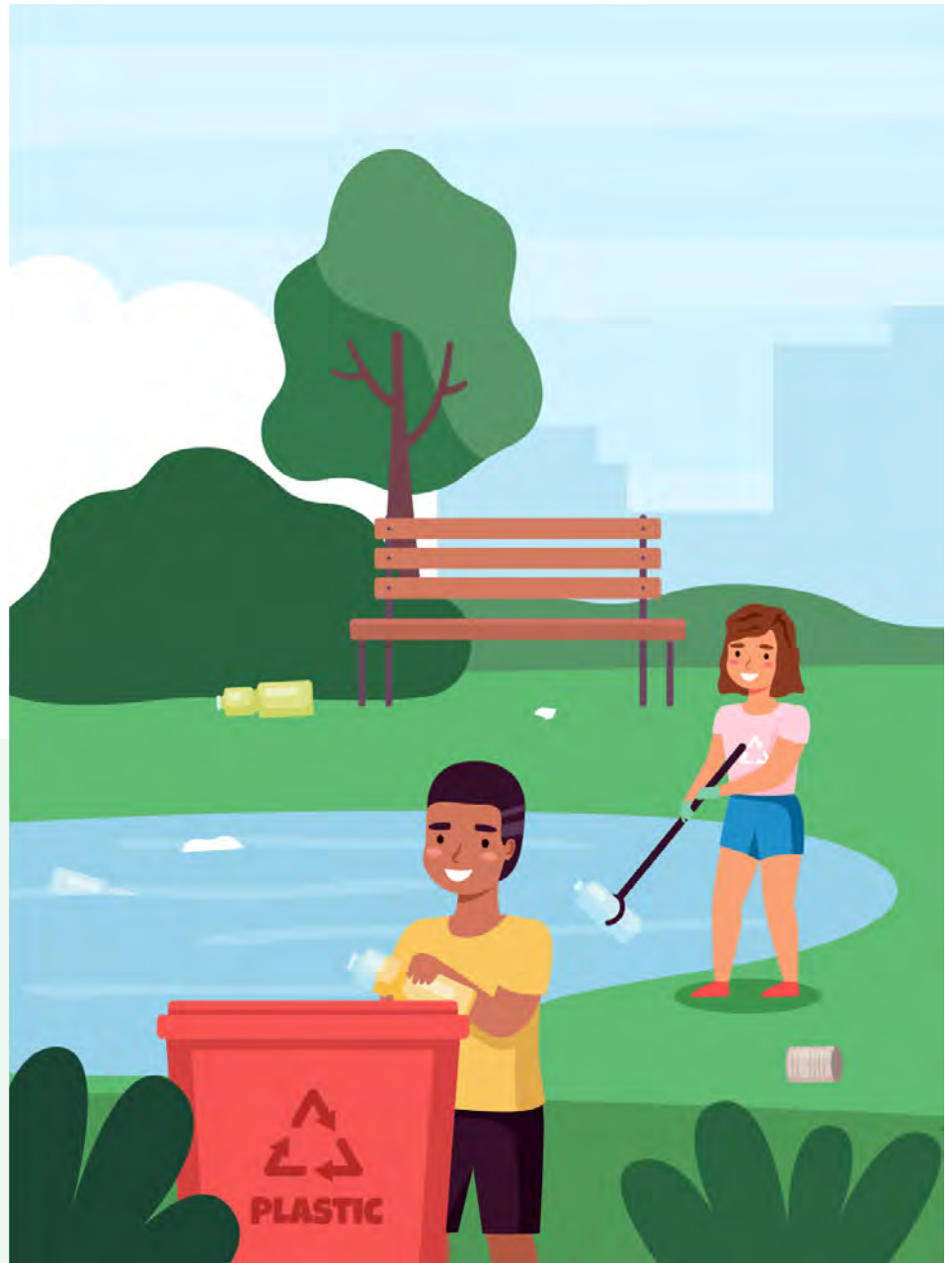
Single use plastics are plastic items that you use one time and throw away, such as plastic water bottles and plastic grocery bags. These plastic items cause a lot of pollution all over the planet, including in rivers, oceans and landscapes. This pollution is harmful to animal and human life.

We can help stop plastic pollution by:

- » Using reusable bags to carry groceries and other items
- » Using reusable water bottles
- » Avoid using single use plastics while you are out like plastic straws and utensils.
- » Join a cleanup - participate in our **plogging challenge** or take time throughout the rest of the year to get a group together to clean up plastic and other litter that is on the ground in your area

In your household, what items can you use to swap out single use plastics?

- Plastic sandwich bags > Reusable food containers
- _____ > _____
- _____ > _____
- _____ > _____
- _____ > _____
- _____ > _____





Calculate your PLASTIC FOOTPRINT



Ready to make a **difference** and see how much plastic you use on a regular basis?

Calculate your personal plastic consumption to help learn how many plastic items you consume and discard every year.

CHART 1 (Daily)	#/DAY		#/YEAR
Plastic Bottles		x 365=	
Plastic Cups		x 365=	
Straws		x 365=	
Cotton swabs with plastic sticks		x 365=	
Plastic resealable bags		x 365=	
Plastic cling wrap		x 365=	
Plastic silverware		x 365=	
Plastic plates		x 365=	
Food containers		x 365=	

CHART 1: Total # consumed/year:

CHART 2 (Monthly)	#/MONTH		#/YEAR
Food packaging*		x 12=	
Plastic grocery bags		x 12=	
Cleaning containers**		x 12=	
Toothbrushes		x 12=	
Toothpaste		x 12=	
Medicine bottles		x 12=	
		x 12=	
		x 12=	

CHART 2: Total # consumed/year:

*Plastic bags for produce, produce in plastic packaging, large beverage containers.

** Dish washer fluid, laundry detergent, fabric softener etc.

	Total # Consumed/Year
CHART 1:	
CHART 2:	
GRAND TOTAL	

So, about your **grand total**...

Was it more than expected? (circle one)

YES

NO

If you answered yes:

Well now you know! Find ways to help reduce your plastic pollution footprint.

If you answered no:

Great job! Keep up the great work of a plastic-free lifestyle!

Participate in our PLOGGING CHALLENGE

Have you ever heard of **plogging**?

This term stands for jogging + picking up trash. Whether you want to jog or enjoy a nice walk, head outside during the week of April 17-22 and do your part to help clean up our community and celebrate Earth Day!

Get **involved!**

Participate in our Idaho Falls Earth Day Plogging Challenge to be entered to win prizes including a bike, Idaho Falls Zoo passes, and Amazon gift cards!



How to **enter!**

- » **Step 1:** Take your favorite routes or explore new routes while picking up any garbage you may encounter along the way. Enter the contest, with the help and supervision of an adult.
- » **Step 2:** Take a picture of you and litter you were able to collect.
- » **Step 3:** Share a photo of your cleanup on social media using the hashtag **#IFEarthDay** and let us know where you went for the cleanup, how much you picked up, and whether we should come back to pick up more.
**Be sure to make your post public so we can share it on the Idaho Falls Earth Day Social Media Accounts, or if your post is private, you can DM the picture to the IF Earth Day account to be posted. If you're a Strava user, you can also share details about your run or walk with us on social media.*
- » **Step 4:** Submit your entries by Saturday, April 22nd to be entered to win.

Please, be safe as you help make our environment cleaner.

All participants who share their posts with us will be entered into a raffle to win a prize!

Dazzle Us!



STUDENT CHALLENGE!

Identify the main idea and supporting details in the paragraphs above.

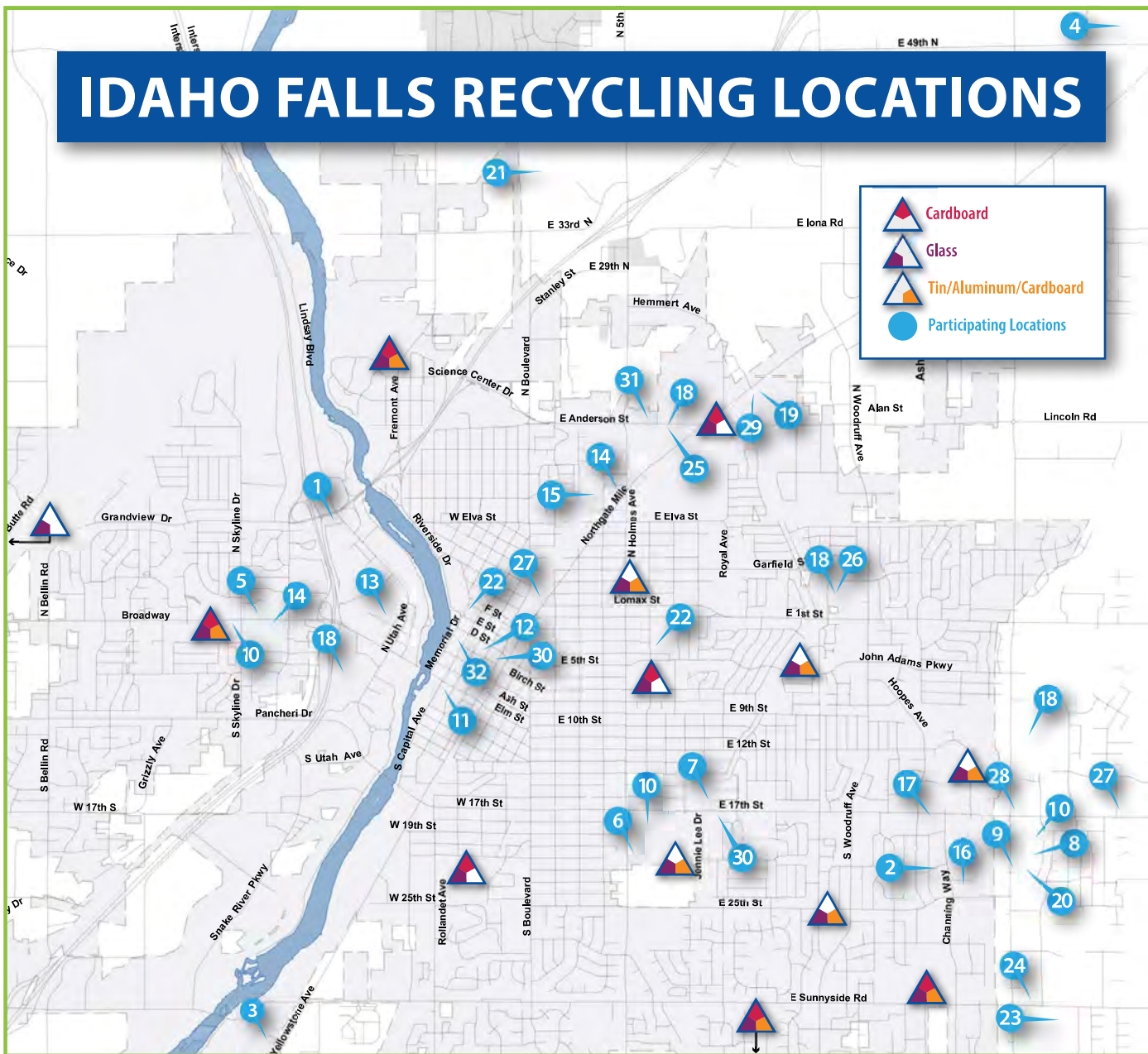
Aren't Zebras just dazzling? In fact, science confirms that they are because a group of zebras are called "a dazzle"! However, we think Zebras are dazzling because of their unique stripes. But why do Zebras have stripes?

Scientists have a few theories. The first is to hide from predators. This is called Camouflage! The second is to help them cool off from the hot sun. Lastly, their stripes might help in protecting them from biting flies. Even though these theories exist, no one knows for sure!

Will you be the future scientist to solve this mystery?



IDAHO FALLS RECYCLING LOCATIONS



WHAT CAN I DO AT HOME?

- Unplug battery chargers or power adaptors, or plug TVs and radios into a power strip and turn off when not in use
- Check air filters and replace as needed
- Install a programmable thermostat (could save about \$175/yr)
- Seal outlets and electrical boxes on outside walls with outlet gaskets
- Plant trees or shrubs around windows to block heat in summer and insulate in winter
- Set your water heater to 120°F or less
- Ride a bus or a bike to school, or carpool
- Plan your errands to reduce trips
- Recycle
- Wash only full loads of dishes & clothes
- In winter, open south facing window coverings during the day and close at night
- Install insulation, energy-efficient appliances, windows, doors, or renewable energy systems (see energystar.gov/taxcredits for tax credit information)
- Replace incandescent light bulbs with CFL or LED bulbs and turn off when not in use

CURBSIDE RECYCLING PROGRAMS

Western Recycling 529-9908 (Idaho Falls, Ammon, Rigby, and surrounding areas)

westernrecycling.net | Email: curbside@westernrecycling.net

\$12/mo. residential – newspapers, magazines, paper, cardboard, #1&2 plastic, aluminum, tin

City of Chubbuck 237-2400

cityofchubbuck.us/streets-sanitation/

\$5/month – All paper, cardboard, #1&2 plastic, aluminum, tin

City of Pocatello 234-6192

pocatello.us/395/Recycling-Programs | Email: pocatellorecycles@pocatello.us

Included in City garbage service – paper, newspaper, magazines, cardboard, #1&2 plastic, aluminum, tin

RECYCLING PLASTICS

Due to an international importing ban, most locations do not accept plastics #3-7



BATTERIES (Lead-Acid)

- 1 Automotive Charging/Starting, 935 Lindsay Blvd
- 2 Batteries Plus, 2182 Channing Way
- 3 The Battery Guy, 1345 Enterprise St
- 4 Start Specialists, 3125 E 49th N
- 5 Auto Parts Stores (various, call first), 1562 W Broadway St | 2517 N Holmes Ave



BATTERIES (Rechargeable)

- 2 Batteries Plus, 2182 Channing Way
- 6 Home Depot, 2075 S Holmes Ave
- 7 Lowe's, 925 E 17th St
- 8 Staples, 1999 S 25th E
- 9 uBreakiFix, 2003 S 25th E D-2



BOOKS

- 10 Albertsons (outside bins 3 locations), 1705 W Broadway St | 590 E 17th St | 1901 S 25th E
- 11 Idaho Falls Public Library, 457 W Broadway St



BULBS (CFL/Florescent)

- 2 Batteries Plus, 2182 Channing Way
- 6 Home Depot, 2075 S Holmes Ave
- 7 Lowe's, 925 E 17th St



CHRISTMAS TREES

- 12 City of Idaho Falls (seasonal), 308 Constitution Way



CARDBOARD

- 12 City of Idaho Falls (see map for 12 outside bin locations)
- 13 Western Recycling (outside bins), 1020 Denver St
- 14 U-Haul, 1091 Northgate Mile | 1545 W Broadway St | 3101 E 17th St Ammon
- 15 Pacific Steel and Recycling, 1155 N Higbee Ave



ELECTRONICS (verify with location accepted electronics)

- 2 Batteries Plus, 2182 Channing Way
- 16 Best Buy, 2404 S 25th E
- 17 Cartridge World, 2064 E 17th St #2
- 18 ecoATM (4 locations inside kiosks), 500 S Utah Ave | 333 N Woodruff Ave | 1555 Northgate Mile | 1201 S 25th E
- 19 eCyclers, 1976 N Yellowstone Hwy
- 8 Staples, 1999 S 25th E
- 20 Target, 2171 S 25th E
- 9 uBreakiFix, 2003 S 25th E D-2
- 15 Pacific Steel and Recycling, 1155 N Higbee Ave



GLASS

- 12 City of Idaho Falls (see map for 13 outside bin locations)
- 20 Target, 2171 S 25th E



HAZARDOUS WASTE

- 21 Bonneville Cty Transfer Station, 2nd Saturday of May and September 2455 Hemmert Ave



INK CARTRIDGES/TONER

- 17 Cartridge World, 2064 E 17th St #2
- 19 eCyclers, 1976 N Yellowstone Hwy
- 6 Home Depot, 2075 S Holmes Ave
- 8 Staples, 1999 S 25th E
- 20 Target, 2171 S 25th E



PAPER

- 13 Western Recycling (outside bins), 1020 Denver St
- 22 Post Office (customers only inside bin), 875 N Capital Ave | 605 4th St
- 11 Idaho Falls Public Library (for shredding only), 457 W Broadway St



PLASTICS (#1 & 2)

- 13 Western Recycling (outside bins), 1020 Denver St
- 20 Target (#s 1-7), 2171 S 25th E



PLASTIC BAGS/FILM

- 10 Albertsons (3 locations inside bins), 1705 W Broadway St | 590 E 17th St | 1901 S 25th E
- 23 Broulim's (2 locations inside bins), 2730 E Sunnyside Rd
- 24 Kohl's, 3175 S 25th E
- 20 Target, 2171 S 25th E
- 25 Fred Meyer, 1555 Northgate Mile
- 26 WinCo, 333 N Woodruff Ave



SCRAP METAL

- 16 Best Buy (appliances, 2404 S 25th E)
- 15 Pacific Steel and Recycling, 1155 N Higbee Ave
- 13 Western Recycling, 1020 Denver St



TIN/ALUMINUM

- 12 City of Idaho Falls (see map for 9 outside bin locations)
- 13 Western Recycling (outside bins), 1020 Denver St
- 15 Pacific Steel and Recycling, 1155 N Higbee Ave
- 20 Target, 2171 S 25th E



TIRES

- 27 Big O, 265 Northgate Mile | 3193 E 17th St
- 28 Discount Tire, 2523 E 17th St
- 29 Fred and Wayne's, 1970 N Yellowstone Hwy
- 30 Les Schwab, 210 Constitution Way | 970 E 17th St
- 31 Jack's Tire and Oil, 595 E Anderson St | 4490 Andco Dr



UNUSED/DISCARDED MEDS

- 32 Bonneville Cty Law Enforcement, 605 N Capital Ave

Locations provided as information only. Listing does not indicate endorsement of listed business. Subject to change. All city locations have bins to accept glass bottles for recycling.

Earth Day activities I can do with...



My family

- ☒ Plant a garden
- ☐ Walk to the store
- ☐ Pick up trash outside
- ☐ Go on a nature walk and count how many different plants I see

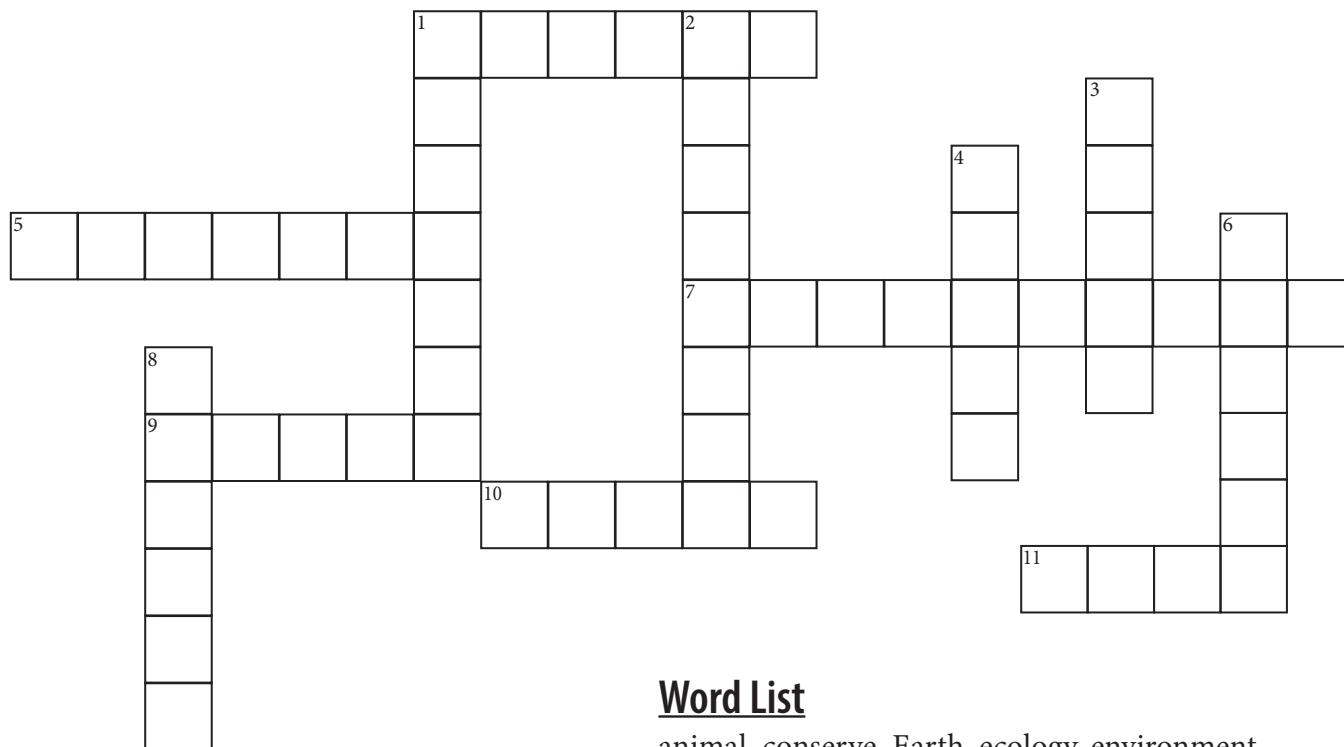
My friends

- ☐ Start recycling
- ☐ Use less water
- ☐ Make crafts out of recycling
- ☐ Make maracas out of used bottles
- ☐ Read a book about the earth
- ☐ Make a mosaic out of expired pasta and beans
- ☐ Make a milk carton bird feeder
- ☐ Paint an old toy
- ☐ Draw a picture of the earth
- ☐ Turn the lights off when you don't need them

My school

- ☐ Make a vision board out of old newspapers and magazines
- ☐ Make a picture frame out of cereal boxes
- ☐ Ride my bike to a friend's house
- ☐ Decorate a used jelly jar and turn it into a plant pot
- ☐ Use a reusable water bottle
- ☐ Make an ornament out of pop cans
- ☐ Write a song about the earth

EARTH DAY CROSSWORD



Word List

animal, conserve, Earth, ecology, environment, growth, plant, recycle, reduce, reuse, soil, water

Across

1. Use less -- use only what you need
5. The science studying the relationship between plants or animals and their environment.
7. The surroundings in which a person, plant or animal lives.
9. Use an item again.
10. H2O
11. The top layer of earth's surface.

Down

1. Extract useful materials from garbage or waste.
2. Use carefully, avoiding waste.
3. A living organism that is not able to move itself.
4. The planet we live on -- the only known planet where life exists.
6. A living being capable of voluntary movement.
8. Getting bigger.



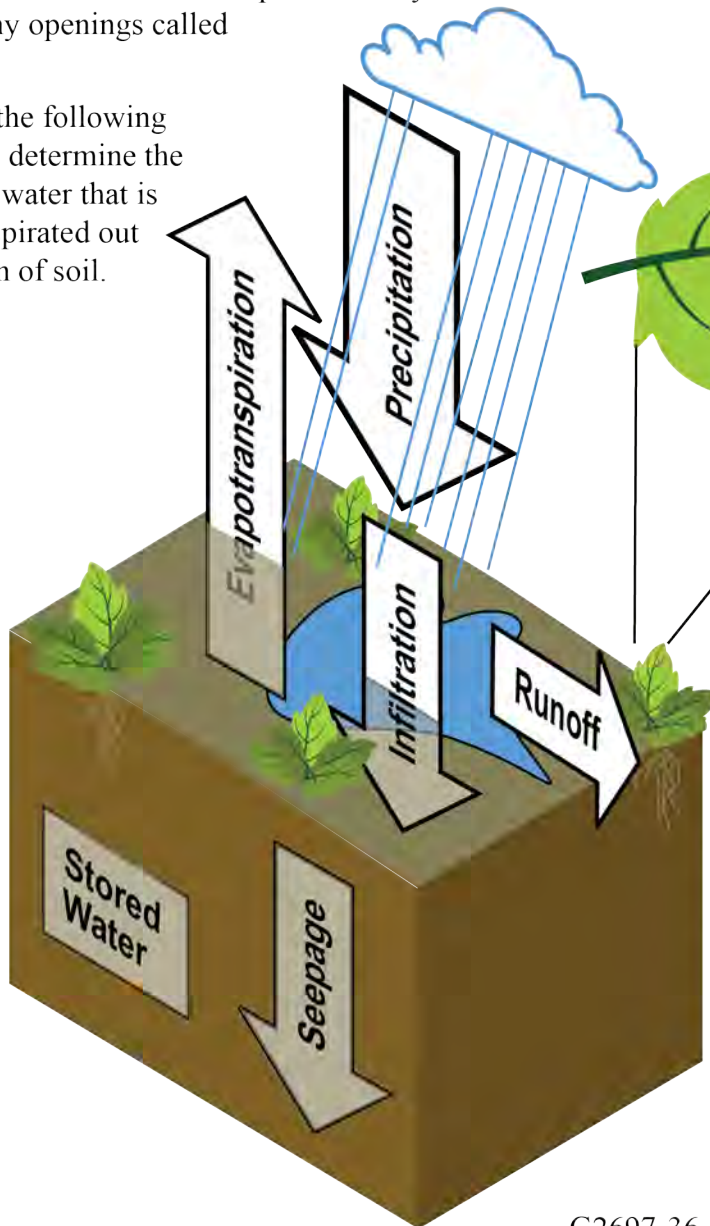
Water Balance in the Soil

After rainwater falls onto the ground, it can remain on the ground surface (puddles that gradually evaporate), drain away (runoff), or soak into the soil (infiltration).

Water that infiltrates into the soil can be stored in the soil, seep down through the soil, or evapotranspire out of the soil.

Evapotranspiration is the combination of evaporation and transpiration. We are all familiar with evaporation, but transpiration may be a new concept. **Transpiration** occurs when water is pulled out of the soil through plant roots and then transported to the plant leaves where it evaporates away through tiny openings called stomata.

Complete the following exercise to determine the amount of water that is evapotranspired out of a section of soil.



The small openings on the underside of leaves are called stomata

10 gallons of rainwater has fallen onto a section of ground....

Question 1:

If 4 gallons (gals) of water drained away as runoff and a puddle formed on the surface containing 1 gallon of water, how many gals infiltrated into the soil?

rearranged

$$\text{Rainwater} = \text{Puddle} + \text{Runoff} + \text{Infiltrated}$$

$$\text{Infiltrated} = \text{Rainwater} - \text{Puddle} - \text{Runoff}$$

$$\text{Infiltrated} = \underline{\hspace{1cm}} \text{ gals} - \underline{\hspace{1cm}} \text{ gals} - \underline{\hspace{1cm}} \text{ gals}$$

$$\text{Infiltrated} = \underline{\hspace{1cm}} \text{ gals}$$

Question 2:

If 2 gallons (gals) was stored in the soil and 1 gal seeped deeper through the soil, use your calculated amount of infiltrated water to determine how many gals have evapotranspired.

rearranged

$$\text{Infiltrated} = \text{Stored} + \text{Seeped} + \text{Evapotranspired}$$

$$\text{Evapotranspired} = \text{Infiltrated} - \text{Stored} - \text{Seeped}$$

$$\text{Evapotranspired} = \underline{\hspace{1cm}} \text{ gals} - \underline{\hspace{1cm}} \text{ gals} - \underline{\hspace{1cm}} \text{ gals}$$

$$\text{Evapotranspired} = \underline{\hspace{1cm}} \text{ gals}$$



Join us for Earth Day at Happyville Farm or
visit our table at the Zoo from 10-2!

At the farm: Saturday, April 22, 11:00am - 3:00pm
640 South Saturn Avenue, Idaho Falls

Activities:

Why do bumble bees have stinky feet? What are the five favorite flowers for butterflies in eastern Idaho? Do you know why honey bees have 5 eyes? Come find out about the amazing pollinators that keep our world humming! Learn how to do the habitat test to see how many pollinators your yard and neighborhood can support, and take home some seeds to grow more of what they need!

Soil Improvement: Hands-on help from professional soil scientists. Get to know your dirt!

Composting: Say hi to our worms at the farm, and learn ways to compost better at home!

Xeriscape: Learn how high desert natives can save water, create beauty, and support more pollinators!

Find out about our summer activities for kids of all ages!

www.happyvillefarm.org

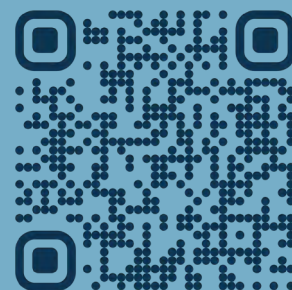
Follow us on FB: @communityfoodbasketfarm

Follow us on Instagram: @commfoodbasketfarm

SUMMER OF WONDER + DISCOVERY

MUSEUM
of
IDAHO

learn more:



kids summer camps
educator camps
pop-in programs
& more!



When you save the bees.
You save the earth.



Browning's Honey Co., Inc.

9019 N 5th E

Idaho Falls, ID 83401

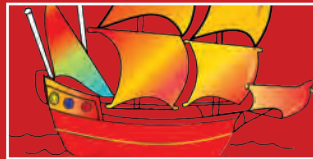
208-523-3692

www.browningshoney.com

SUMMER at **ART**itorium ON BROADWAY

CLASSES: \$45 FOR A 4-CLASS SERIES
CAMPS: \$110-\$125 FOR A 4-DAY CAMP
(SIBLINGS DISCOUNT AVAILABLE)

June



ART CAMP: ART ADVENTURES
JUNE 5-8
1-5PM DAILY

AGES 5-7



THEATER CAMP: LITTLE SHAKESPEARE
JUNE 13-16
2-5PM DAILY

AGES 8-12



WHAT IF? CLASS
TUESDAY & THURSDAY
JUNE 20-29
10-11AM

AGES 5-7



MIXED MEDIA
TUESDAY & THURSDAY
JUNE 20-29
11:30-12:30PM

AGES 8-12

July



ART CAMP: ITS ALL ABOUT ART
JULY 10-13
1-5PM DAILY

AGES 7-11



NATURE ART
TUESDAY & THURSDAY
JULY 18-27
10-11AM

AGES 5-7



FUN ABSTRACT ART
TUESDAY & THURSDAY
JULY 18-27
11:30AM-12:30PM

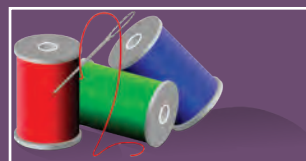
AGES 8-12



THEATER CAMP: DEVISED BY YOU
JULY 18-21
2-5PM DAILY

AGES 6-9

august



ART CAMP: FABRIC AND FIBERS
JULY 31- AUGUST 3
1-5PM DAILY

AGES 8-12



THEATER CAMP: YOUTH JAM READER'S THEATER
AUG 8-11
2-5PM DAILY
AGES 7-11



ROARING YOUTH JAM
AUGUST 10-12
FREE!
ALL AGES



ARTITORIUM IS ALSO OPEN
7 DAYS A WEEK FOR DROP-IN FUN!
SEE OUR WEBSITE FOR
MORE INFORMATION

SUMMER 2023 CALENDAR

MAY

- 1 Summer Men's Basketball Registration Opens, STARTS June 19
- 3 Girls Fastpitch Softball Tournament Registration Opens
- 5-7 Cinco De Mayo Celebration @ Tautphaus Park 11am-7pm
- 10 Ice Breaker Girls Fastpitch Softball Tournament Deadline
- 10 Men's Adult Summer Basketball League Registration Deadline
- 10 Knothole, Bobbie-Sox Slow Pitch, and Fast Pitch Baseball Registration Deadline
- 12 & 13 Zoo Tots: Animal Tails 10-10:45am
- 13 Sage Lake's Men's Opener (members only)
- 13 Free Swimming Lessons @ Aquatic Center Today
- 15 Sage Lakes Pro Am
- 15 Youth Baseball Begins
- 15 May Aquatic Bootcamp Class STARTS TODAY. Onsite Reg. OK
- 15 Swim Lesson Registrations Open for June/July/August
- 15 Men's Slowpitch and CO-ED Softball Begins
- 23 Little Hitter's Session 1 Begins
- 24 Disc Golf Registration Deadline
- 24 Little Kickers Soccer Session # 2 Begins
- 27-29 Field of Honor presented by Exchange Club of Idaho Falls @ Freeman Park
- 27&29 Ben Allen 2-Person Sandcreek and Pinecrest
- 30 Lady Scramble @ Pinecrest
- 31 Youth Flag Football Registration Opens, STARTS August 19

JUNE

- 3 Dixie's Diner 2 Person Best Ball @ Pinecrest
- 2-3 Ice Breaker Softball Tournament
- 5 Aquatic Center Summer Programs Begin
- 5 June Aquatic Bootcamp STARTS TODAY. Onsite registration ok
- 5 Summer Swim Team Session 1 STARTS TODAY. Onsite registration OK
- 6-7 Sage Lakes Ladies Club Championship (members only)
- 7 Registration Deadline for Summer Men's Basketball
- 9 TPZS Concert Series @ Zoo
- 10 Pinecrest Family Day 3pm
- 12 Lifeguarding Class Session 4 STARTS. Day of reg ok
- 14 Little Kickers Session 3 Registration Open. STARTS July 12
- 17 Sand Creek Family Day at 3pm
- 17 Battleson's 2 Person Best Ball @ Sage Lakes
- 19 Falls Men's and Co-ed Softball Registration Open. Men's STARTS August 7 and Co-ed STARTS August 14
- 21 TPZS Watercolors in the Wild @ Zoo
- 21 Little Hitters Session 2 Registration Opens, STARTS July 18
- 23-24 Ball on the Falls Softball Tournament
- 24 Idaho Falls Pride Celebration @ Riverwalk on Memorial 9am-3pm
- 24-25 The Outsource 2/4 Men's Best Ball @ Pinecrest
- 24 Sage Lakes Family Day 3pm

JULY

- 1 Pinecrest Family Day 3pm
- 8 Michelob-Ultra 2 Man Best Ball @ Sandcreek
- 8 Sage Lakes Family Day 3pm
- 10 Fall Volleyball Registration Open. STARTS September 4
- 10 Fall Men's Basketball Registration Opens, STARTS September 11
- 10 Fall Men's Basketball Registration Opens, STARTS September 11
- 10 July Aquatics Bootcamp STARTS TODAY. Onsite Registration OK
- 10 Fall Volleyball Registration Open. STARTS September 4
- 11-12 Pinecrest Ladies Club Championship (members only)
- 14-15 IF Diamond Classic Softball Tournament
- 14 TZPS Concert Series @ Zoo
- 15 Sandcreek Family Day 3pm
- 19 Watercolors in Wild @ Zoo
- 19 Fall Jr. High Boys Basketball Registration Opens, STARTS October 14
- 19 Little Passers Registration Opens, STARTS August 17
- 19 Fall Youth Basketball Registration Opens, STARTS Oct. 14
- 19 Men's and Co-ed Softball Registration Deadline
- 21 Wines in the Wild @ Zoo
- 22 Pinecrest Family Day 3pm
- 26 Little Kickers Session 4 Registration Open. STARTS August 23
- 26 Sage Lakes Snake River Seniors
- 28-29 Tournament of Queens Softball Tournament
- 29 Sand Creek Family Day 3pm
- 29-30 Gold Pot Classic @ Sand Creek and Pinecrest

AUGUST

- 2 Warbonnet Round Up Kickoff (FREE) 4:30pm-7:30pm
- 3-5 Warbonnet Round Up @ Sandy Downs 4:30pm-10pm
- 3 Sage Lakes Ladies 2 Best Ball
- 5 Sage Lakes Family Day 3pm
- 7 August Aquatic Bootcamp Class STARTS TODAY. Onsite Registration OK
- 9 Fall Volleyball Registration Deadline
- 9 Fall Men's Basketball Registration Deadline
- 10-12 Roaring Youth Jam presented by Idaho Falls Art Council @ Riverwalk on Memorial Drive 10am-4pm
- 11 TPZS Concert Series @ Zoo
- 12 Kids "Tri" Harder Triathlon @ Wes Deist Aquatic Center
- 12-13 Mel Erickson Men's Club Champ @ Sand Creek (members only)
- 12 Pinecrest Family Day 3pm
- 14 Sand Creek Pro Am
- 16 TZPS Watercolors in the Wild @ Zoo
- 15-16 Sand Creek Ladies Club Championship (members only)
- 18 TZPS Zoo Brew @ Zoo
- 19 Pinecrest 3rd Annual "Jacie Sites Concert"
- 19 Sand Creek Family Day 3pm
- 23 Pinecrest Snake River Seniors
- 26 Sage Lakes Family Day 3pm

RECURRING EVENTS

- Every Tuesday June 13-September 15 River Concert Series by IF Art Council @ Greenbelt Stage 6:15pm-8:30pm
- Every Saturday May 6-October 28 Idaho Falls Farmers Market 8am-1pm
- Monthly Cleave Lewis Basketball Skills Registration Deadline end of every month STARTS first week of new month

More Info and Ways to Register:



Idaho Falls Earth Day Celebration

*Virtual Bike Ride
Plogging Challenge
INL Earth Day Art Contest
Happyville Farm Live Event
Earth Day Booths
Contest Prizes
Food & more!*



*Children ages 0-12 can get
into the zoo for free with
a paid adult admission &
canned food donation!*

*Adult admission will be half-
price during the Idaho Falls
Earth Day Celebration!*

**April 22, 2023
10:00 a.m. - 2:00 p.m.
Idaho Falls Zoo at Tautphaus Park**

*For more information about Idaho Falls Earth Day
celebration and contests, visit:*

ifearthday.com



**MUSEUM
of
IDAHO**

IDAHO
ENVIRONMENTAL
COALITION



INL
Idaho National Laboratory